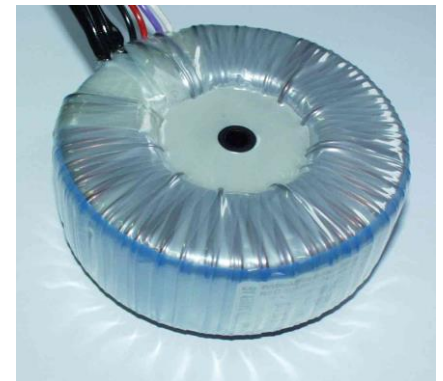
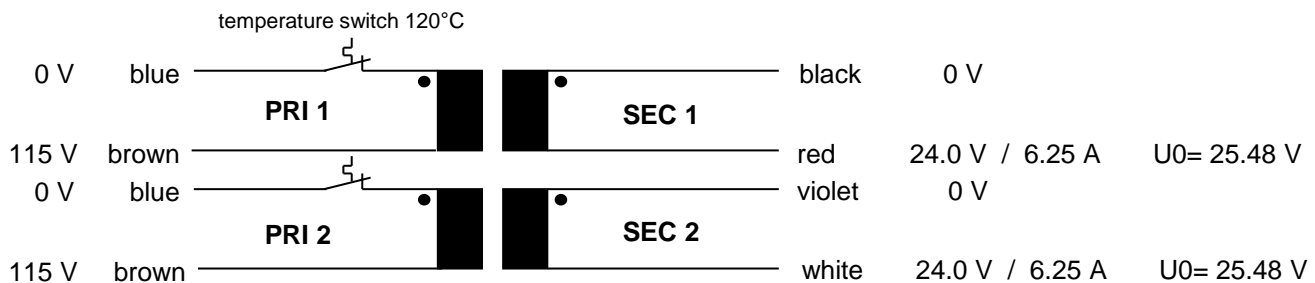


## Data sheet Polytronik® Toroidal transformer

|   |                                  |
|---|----------------------------------|
| Part no.:                               | <b>RSO 825055</b>                |
| Description:                            | RKT 300VA/ 2x115V/ 2x24V 2x6.25A |
| Isolating transformer according to:     | EN 61558-2-4 / VDE 0570          |
| Power [VA]:                             | 300                              |
| Input voltage [AC]:                     | 2 x 115 V +-10%                  |
| Output voltage [AC]:                    | 2 x 24.00 V                      |
| Output current [AC]:                    | 2 x 6.25 A                       |
| Frequency [Hz]:                         | 50/60                            |
| Dielectric strength PRI - SEC [AC]:     | 4400 V                           |
| Efficiency [%]:                         | 93                               |
| Power loss at no-load [W]:              | 1.96                             |
| Maximum ambient temperature $t_a$ [°C]: | 60                               |
| Temperature class:                      | B (130°C)                        |
| Temperature switch:                     | 120°C (automatically resetting)  |



### Schematic:



possible connection: parallel connection **115V** = connect blue with blue and brown with brown  
**PRI 1 und PRI 2** series connection **230V** = connect brown with blue

possible connection: parallel connection **24.0V / 12.50A** = connect black with violet and red with white  
**SEC 1 und SEC 2** series connection **48.0V / 6.25A** = connect red with violet

|                           |  |                                    |                |
|---------------------------|--|------------------------------------|----------------|
| Approval marks:           | CE; ENEC; UL508 (E182061)  |                                    |                |
| Connections:              | primary and secondary strands 200mm long, ends assembled with ferrules |                                    |                |
| Model:                    | toroidal transformer pottet on mounting disc with through-hole 8.1 mm  |                                    |                |
| Appliance class:          | prepared for class II  |                                    |                |
| Protection class:         | IP 00  |                                    |                |
| Recommended fuse ratings: | primary  | 5.00 AT / 2.50 AT<br>(115V / 230V) | (IEC60127-2-5) |
|                           | secondary 1  | 6.30 AT                            | (IEC60127-2-3) |
|                           | secondary 2  | 6.30 AT                            | (IEC60127-2-3) |
| Dimensions:               | diameter approx. =   | 130 mm                             |                |
|                           | height approx. =   | 60 mm                              |                |
| Weight:                   | approx. 3.07 kg  |                                    |                |